

BOT-R9V-WIFI Boiler Thermostat



Scan the QR code to obtain multilingual instruction manual:



English



Version:1.0(01/2024) 71.04.00434

◆ Personalized Scanning Code

Scan the corresponding QR code according to your needs to obtain the content.

Mounting Video

- Scan the QR code to obtain mounting video.
- Scannen Sie den QR-Code, um ein Montagevideo zu erhalten.
- Escanee el Código QR para obtener el video de instalación.
- Zeskanuj kod QR, aby uzyskać wideo montażowe.
- Сканируйте QR - код, чтобы получить видео установки.



Operation Video

- Scan the QR code to obtain the video of equipment operation steps.
- Scannen Sie den QR-Code, um das Video der Geräteschritte zu erhalten.
- Escanee el Código QR para obtener el video de los pasos de operación del dispositivo.
- Zeskanuj kod QR, aby uzyskać wideo kroków obsługi sprzętu.
- Сканируйте QR - код, вы получаете видео шагов работы устройства.

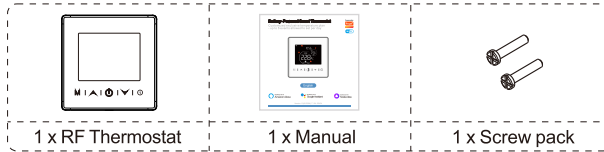


Networking Video

- Scan the QR code to obtain networking video.
- Scannen Sie QR-Code, um Netzwerkvideo zu erhalten.
- Escanee el Código QR para obtener el video de la red.
- Zeskanuj kod QR, aby uzyskać wideo sieciowe.
- Сканируйте QR - код, чтобы получить сетевое видео.



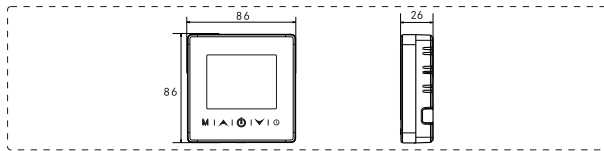
◆ Standard Accessories



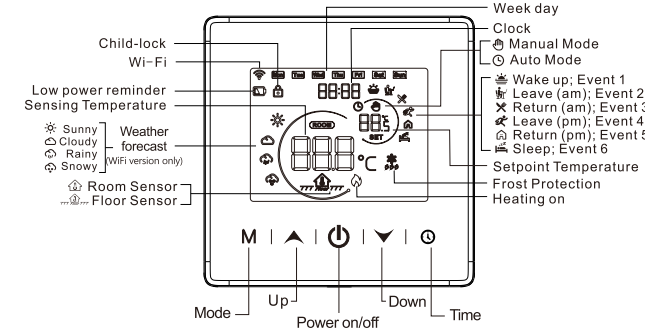
◆ Technical specifications

Power supply	3 x 1.5 V alkaline AA batteries
Temperature setting range	5~95°C
Switch deviation	0.5~10°C, Factory setting 0.5°C
Ambient temperature	-5~50°C
Setpoint temperature accuracy	0.5°C
Protection level	IP20
housing material	Anti-Flammable PC

◆ Dimensions (Unit: mm)



◆ Product Overview



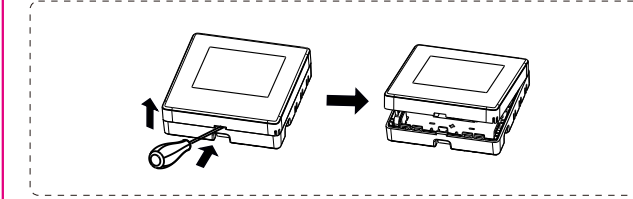
This product is powered by batteries, which greatly expands the usage scenarios. It is suitable for situations where AC-power supply is not available. The device has 5 touch buttons and a 2.8-inch VA LCD screen, providing excellent interaction. It uses high-precision temperature sensors and high-quality relays to provide good temperature measurement and temperature control effects, giving you a comfortable and warm home. In addition, it is easy to install and the battery is convenient to replace.

◆ Installation

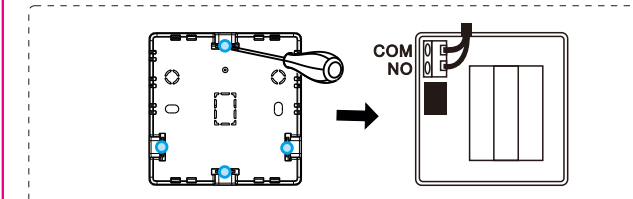
3 x 1.5 V alkaline AA batteries

- * Note: • It is recommended to use 3 new LR6 AA batteries.
- Please ensure the batteries are the right way round.

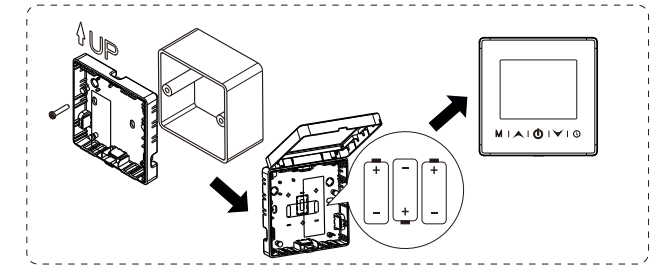
- Release front cover by inserting a head screw-driver into bottom crack.



- Choose one of four openings on the edge, pry along the dotted line by a flat-blade screwdriver, then pass wires through it and connect the wires.

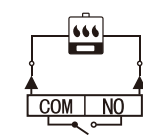


- Attach the thermostat base to wall-cassette by two screws. After attaching it, make sure there is no deformation on thermostat. (Suggested torque is 0.2~0.4N.m (2.0~4.1kgf.cm).)
- After inserting the batteries, reattach the front cover and latch it into place.



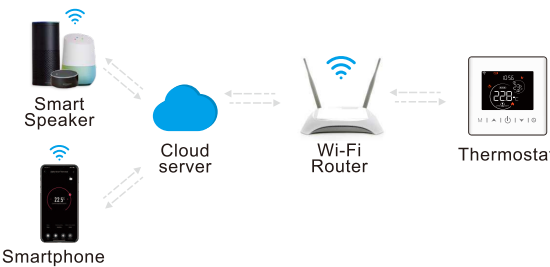
◆ Wiring Diagram

- Dry Contact for Boiler Control



***NOTE:**
The thermostat operates in full capacity in areas with the altitude of less than 2500m above sea level. Power rating of external load should be less than or equal to 80% rated power of the thermostat in areas with altitude of 2500m to 4200m.

◆ APP Remote Control And Voice Control(Wi-Fi version only)



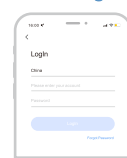
◆ Software Installation(Wi-Fi version only)

① Download Smart Life APP



Scan the QR code above or search "Smart Life" on App Store and Google Play to download the Smart Life APP.

② Registration or Log in



Enter the Register/Login interface; tap "Register" to create an account by entering your phone number to get verification code and "Set password". Choose "Log in" if you already have a Smart Life account.

③ Add device

- During power-off, press and hold the "⏻" for 3 seconds until "Wi-Fi" and "🔌" is blinking.

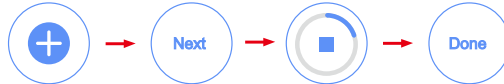


***Attention:** Please turn on the Bluetooth and WiFi of your phone in advance. And ensure that the smartphone OS allows the Smart Life APP to access the Bluetooth function.

- Enter the "Home" interface of the APP, click "+" in the upper right corner, select "Add Device".
- The system will automatically search and find the device, and then click "Add".



- Select 2.4G Wi-Fi and enter the password, click "Next".
- Wait for a while until the device is added successfully, then click "Done" to finish the installation.



◆ Main function

Power on/off Press "⏻" shortly, the thermostat will be turn on/off.
Time setting Press and hold "⏻" for 3 seconds to enter time setting, and adjust it as follow: • Choose modified item by pressing "⏻", and set the week day and clock by pressing "▲" or "▼". Finally, confirm by pressing "⏻" shortly.
Temperature setting Press "▲" or "▼" to increase or decrease setpoint temperature by 0.5°C.
Temperature Control Mode Press "M" shortly to switch between manual mode and auto mode. • Manual Mode: The temperature is controlled in accordance with the current temperature set via "▲" or "▼". It remains activated until the next manual change. • Auto mode: The temperature is controlled in accordance with the set heating profile. Manual changes are activated until the next point at which the profile changes ("⏻" is displayed on the screen). Afterwards, the defined heating profile will be activated again.
Child-lock • Press and hold "▲" + "▼" for 3 seconds to activate child-lock, the thermostat can be locked. • Press and hold both keys again to deactivate child-lock.

Daily programming setting

For all seven days of the week, you may program up to 6 distinct time periods per day, with individual target temperatures set for each period. Press and hold "M" for 3s to enter the daily programming setting.
• Choose modified item by pressing "M", and set the week day, clock and temperature by pressing "▲" or "▼". Finally, confirm by pressing "⏻" shortly.

Events	Symbols	Time		Temperature		
		Default value	Modify	Default value	Modify	
Daily	1	☀	06:00	Press "▲" or "▼"	20°C	Press "▲" or "▼"
	2	☁	08:00		15°C	
	3	☔	11:30		15°C	
	4	🌧	12:30		15°C	
	5	🏠	17:00		22°C	
	6	🌃	22:00		15°C	

Network config (Wi-Fi version only)

During power off, press and hold "⏻" for 3 seconds to enter network config, and add the thermostat on Tuya Smart/Smart Life APP.

Low power reminder

When the battery power is less than 20%, battery power icon "🔋" flickers, it is recommended to replace the new battery as soon as possible before use.

- *Note: ① If the device does not respond when you operate it, it may be updating from APP. Please wait patiently until the updating completes.
- ② All operations will only respond when the screen is illuminated.

◆ Advanced setting

* Usually for Professional Technicians

During power-off, press "M" for 3 seconds to enter advanced setting mode, then repress "M" to switch to next mode. Press "⏻" to save and exit advanced setting mode.

Code	Meaning	"▲" or "▼"	Default Value
1ADJ	Temp. calibration	-9.9~9.9°C	0°C
4DIF	Switch deviation	0.5~10°C	0.5°C
5LTP	Frost protection	ON: frost protection on OFF: frost protection off	OFF
7RLE	Type of relay output	00: Relay is normally-open 01: Relay is normally closed	00
9HIT	Temp. upper limit	5~95°C	50°C
AFAC	Restore factory settings	Press and hold "▲" for 3 seconds	/

◆ Voice control(Wi-Fi version only)

After waking up the speaker, you can say:

Amazon Alexa : Alexa,

- * Open the HEATER
- * Close the HEATER.
- * Make the HEATER colder.
- * Make the HEATER warmer .
- * What temperature is the HEATER set to?
- * Set the HEATER to auto.
- * Set the HEATER to eco.

Google Assistant : OK google,

- * Open the HEATER.
- * Close the HEATER.
- * Set the HEATER to 26 degree.
- * Drop the HEATER by 1 degree.
- * Raise the HEATER by 1 degree.
- * Set the HEATER to auto .
- * Set the HEATER to eco.

***Attention:**
"HEATER" is the device name, you can also name it yourself. The temperature unit of thermostat and smart speaker must be identical.